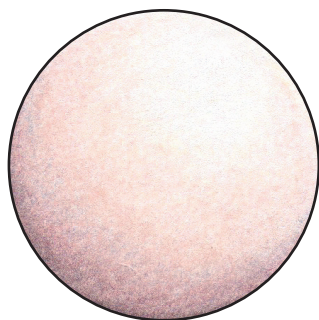






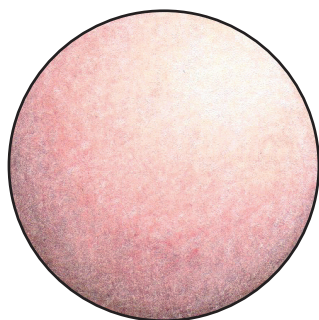







**Light tone**



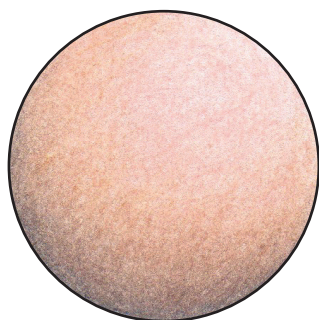
-  Ivory 103
-  Beige red 132 (was Light flesh)
-  Cinnamon 189
-  Light ultramarine 140
-  Caput mortum 169
-  Walnut brown 177






**Medium tone**



-  Beige red 132 (was Light flesh)
-  Cinnamon 189
-  Coral 131 (was Medium flesh)
-  Light Ultramarine 140
-  Van-Dyke-brown 176

**Tanned tone**



-  Cinnamon 189
-  Burnt ochre 187
-  May green 170
-  Warm grey V 274
-  Dark sepia 175